

SNUG FIT
O&P 3D SCAN SOLUTIONS

Information

Mesh to Mesh

16895 sample points:
16895 calculated
0 interpolated

Mean deviation: 0.2625
of 0.8738 to 2.2119

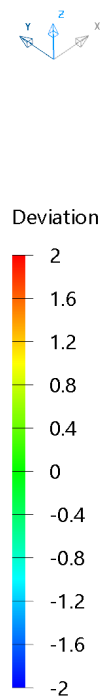
Standard deviation: 0.2369
0.02% of errors have a magnitude below 0.2625
89.20% of errors have a magnitude below 0.4994
96.30% of errors have a magnitude below 0.7363

Comparison Analysis

Select source items
 Select target items

Line scale
1.0

Calculate Cancel Help



SNUG FIT
O&P 3D SCAN SOLUTIONS

Information

Mesh to Mesh

16892 sample points:
16892 calculated
0 interpolated

Mean deviation: 0.2365
Error range: -0.9478 to 3.5837

Standard deviation: 0.2215
0.02% of errors have a magnitude below 0.2365
88.85% of errors have a magnitude below 0.4991
96.04% of errors have a magnitude below 0.7366

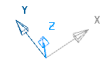
OK

Comparison Analysis

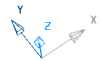
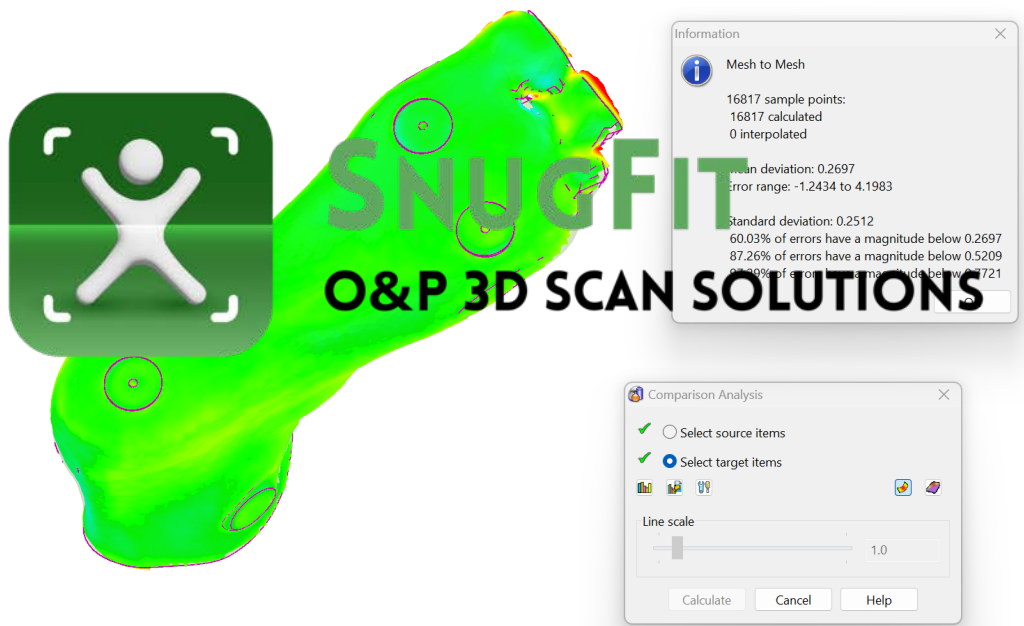
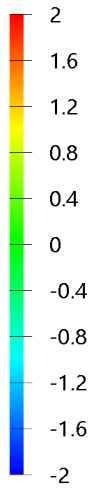
Select source items
 Select target items

Line scale
1.0

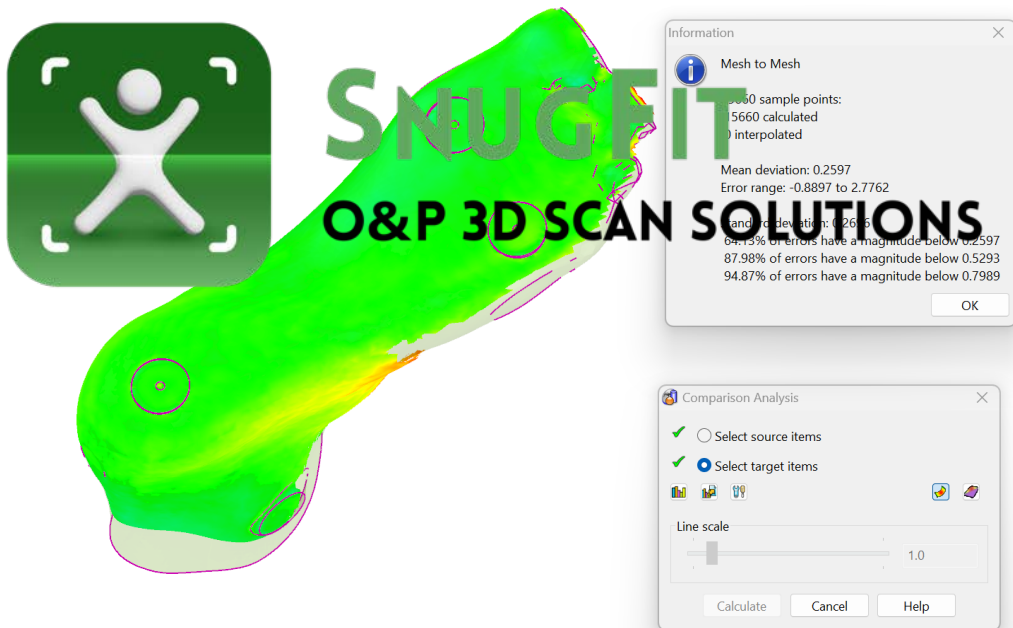
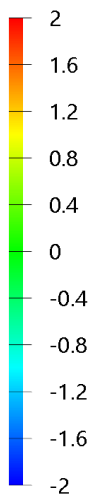
Calculate Cancel Help

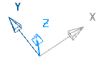


Deviation

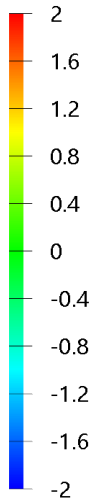


Deviation





Deviation



SNUGFIT
O&P 3D SCAN SOLUTIONS



Information

Mesh to Mesh

18329 sample points:
18329 calculated
0 interpolated

Mean deviation: 0.3571
Error range: -3.7640 to 5.2544

Standard deviation: 0.4012
63.72% of errors have a magnitude below 0.3571
89.69% of errors have a magnitude below 0.7583
97.09% of errors have a magnitude below 1.1595

OK

Comparison Analysis

Select source items

Select target items

Line scale

1.0

Calculate Cancel Help